

# ENTRANCES & DOORS

## PASSENGER ELEVATOR ENTRANCES & DOORS





# ENTRANCES & DOORS

## PASSENGER ELEVATOR ENTRANCES & DOORS

## TYPICAL APPLICATIONS

### ENTRANCES INCLUDE:

- ASME A17.1/CSA B44 SAFETY CODE COMPLIANCE FOR DOORS AND PANELS
- 14GA OR 16GA FRAMES
- 14GA OR 16GA DOORS
- EXTRUDED SILL (THRESHOLD)
- SILL SUPPORT, UPRIGHTS, HEADER & FIXING ANGLES
- OPERATOR INTERFACE DRILLING AT TOP & BACK OF DOOR AND HEADER AS REQUIRED
- DOOR BOTTOM GIBS/GUIDES
- DOOR SIGHT GUARDS
- DOOR ASTRAGAL RESILIENT MEETING EDGES FOR CENTER PARTING TYPE OPENINGS
- DOOR EMERGENCY KEYWAY SLEEVE OR LOCKABLE ESCUTCHEON TUBE AS REQUIRED
- FACIA, DUST COVERS AND TOE GUARDS WHERE APPLICABLE

Hoistway landing entrances and sliding hoistway entrance doors are ubiquitous in modern buildings.

Entrances and doors provide protection of hoistway openings capable of withstanding impacts applied toward the elevator shaft.

Fire rated frames and panels prevent the spread of fire within the building. Decorative options range from functional to ornate and may be customized to complement any decor.

### OPTIONAL FEATURES:

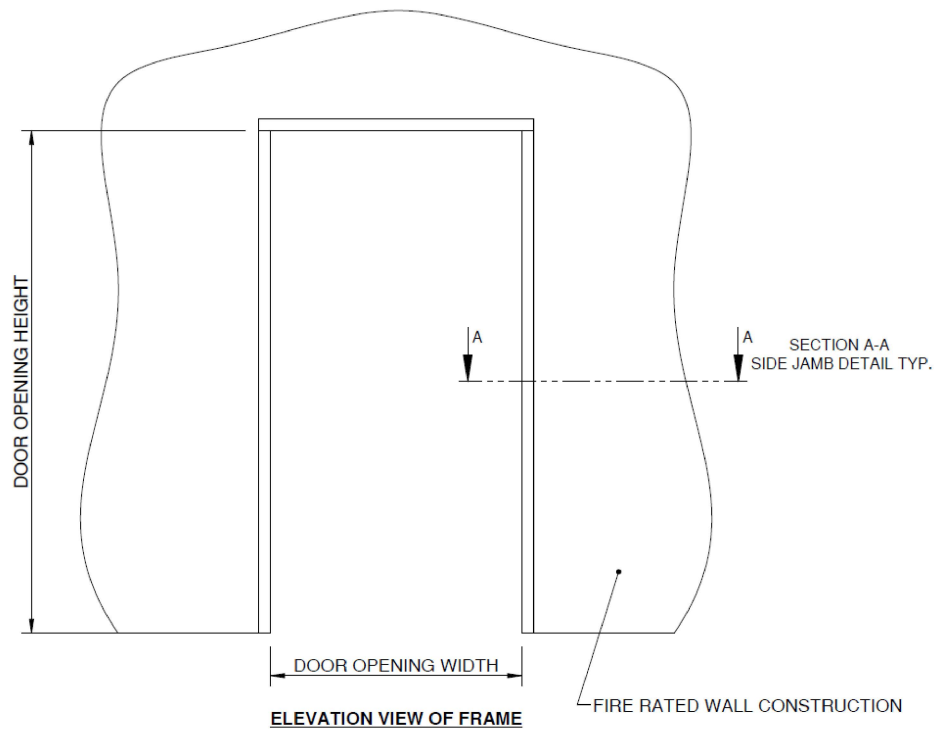
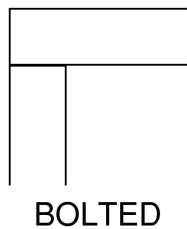
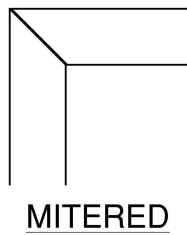
- POWDER COAT/PAINTED FINISH (STANDARD AND CUSTOM COLORS)
- STAINLESS STEEL FINISHES
- BRONZE FINISHES
- RIGIDIZED METALS FINISHES
- FORMS+SURFACES FINISHES
- PLASTIC LAMINATE FINISH DOORS
- WOVEN WIRE MESH DOOR CLADDING
- CUSTOM ETCHED PANEL DESIGNS
- FLOOR MARKING JAMB BRAILLE PLATES
- ELEVATOR ID PLATES
- STAR OF LIFE PLATES
- FIREFIGHTERS PLATES
- FRAME CUTOUTS FOR SWITCHES & FIXTURES
- TRANSOM FRAMES
- PLATE FRAME CLADDING



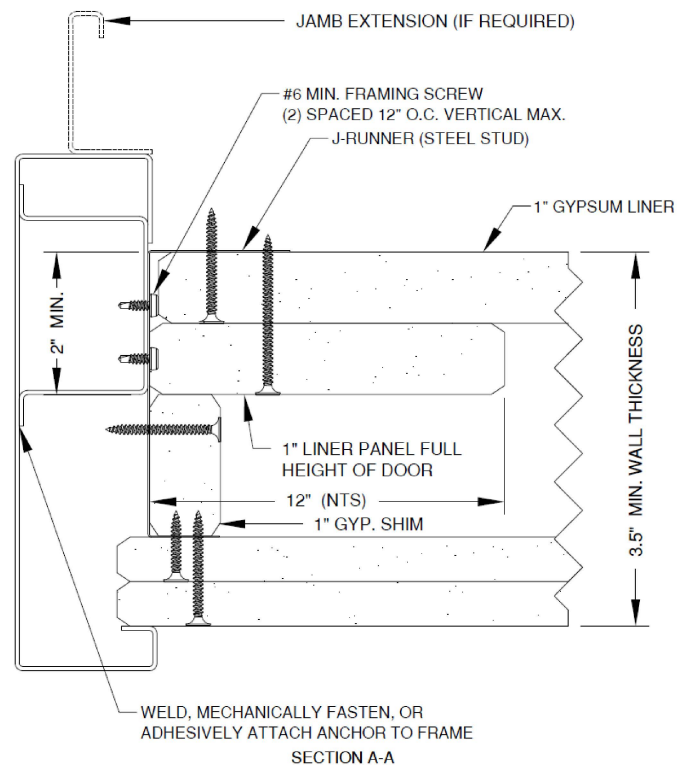
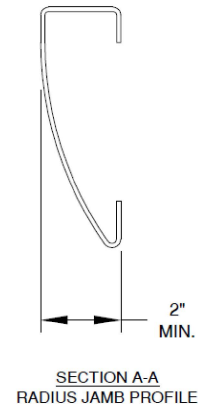
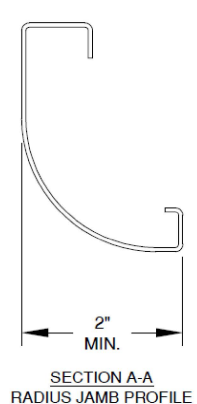
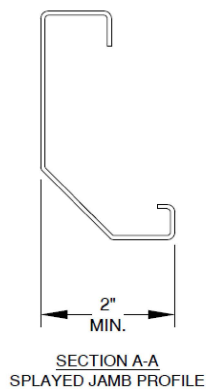
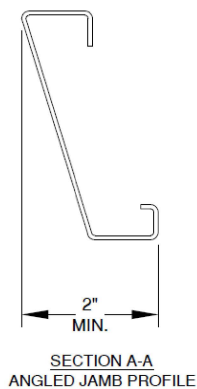


# ENTRANCES & DOORS

## PASSENGER ELEVATOR ENTRANCES & DOORS



### FRAME CONSTRUCTION OPTIONS

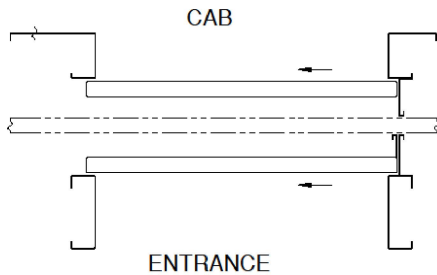




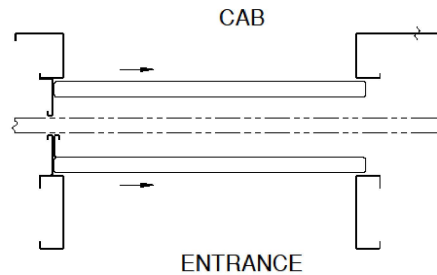
# ENTRANCES & DOORS

## PASSENGER ELEVATOR ENTRANCES & DOORS

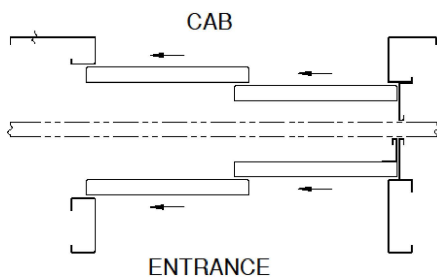
### DOOR OPENING TYPES:



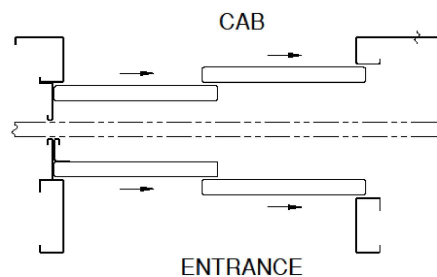
**SINGLE SLIDE RIGHT HAND (1SR)**



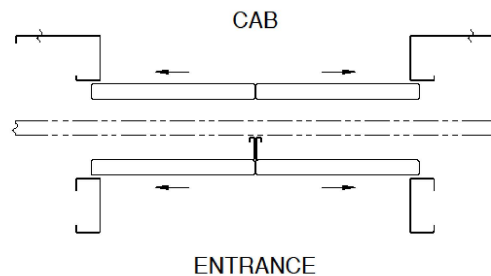
**SINGLE SLIDE LEFT HAND (1SL)**



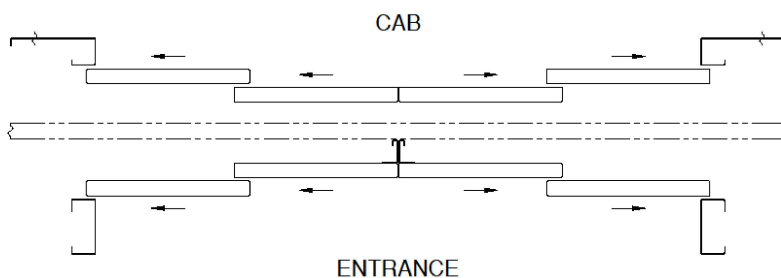
**TWO SPEED RIGHT HAND (2SR)**



**TWO SPEED LEFT HAND (2SL)**



**CENTER OPENING (CO)**



**TWO SPEED CENTER OPENING (2SCO)**