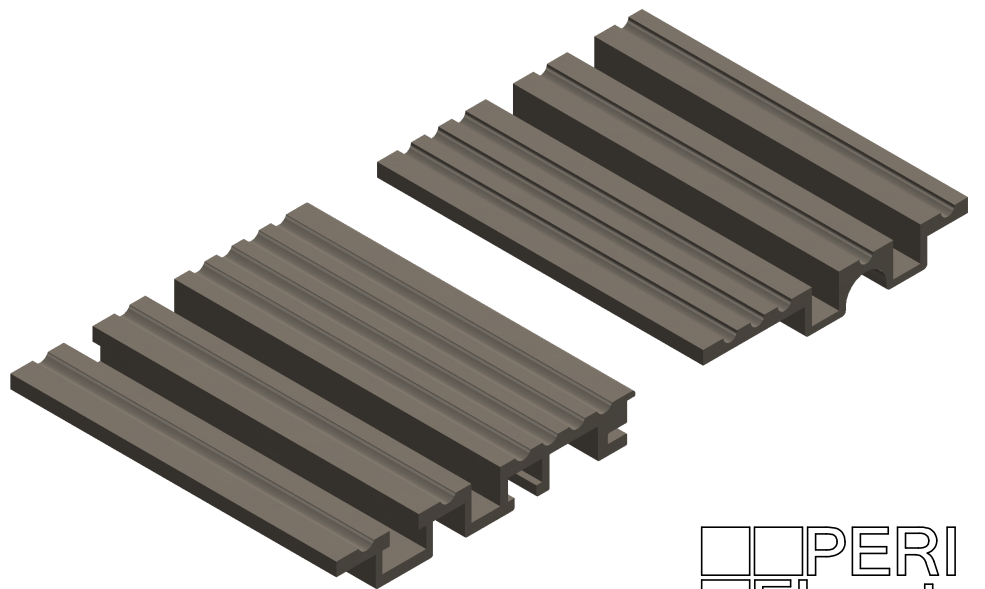
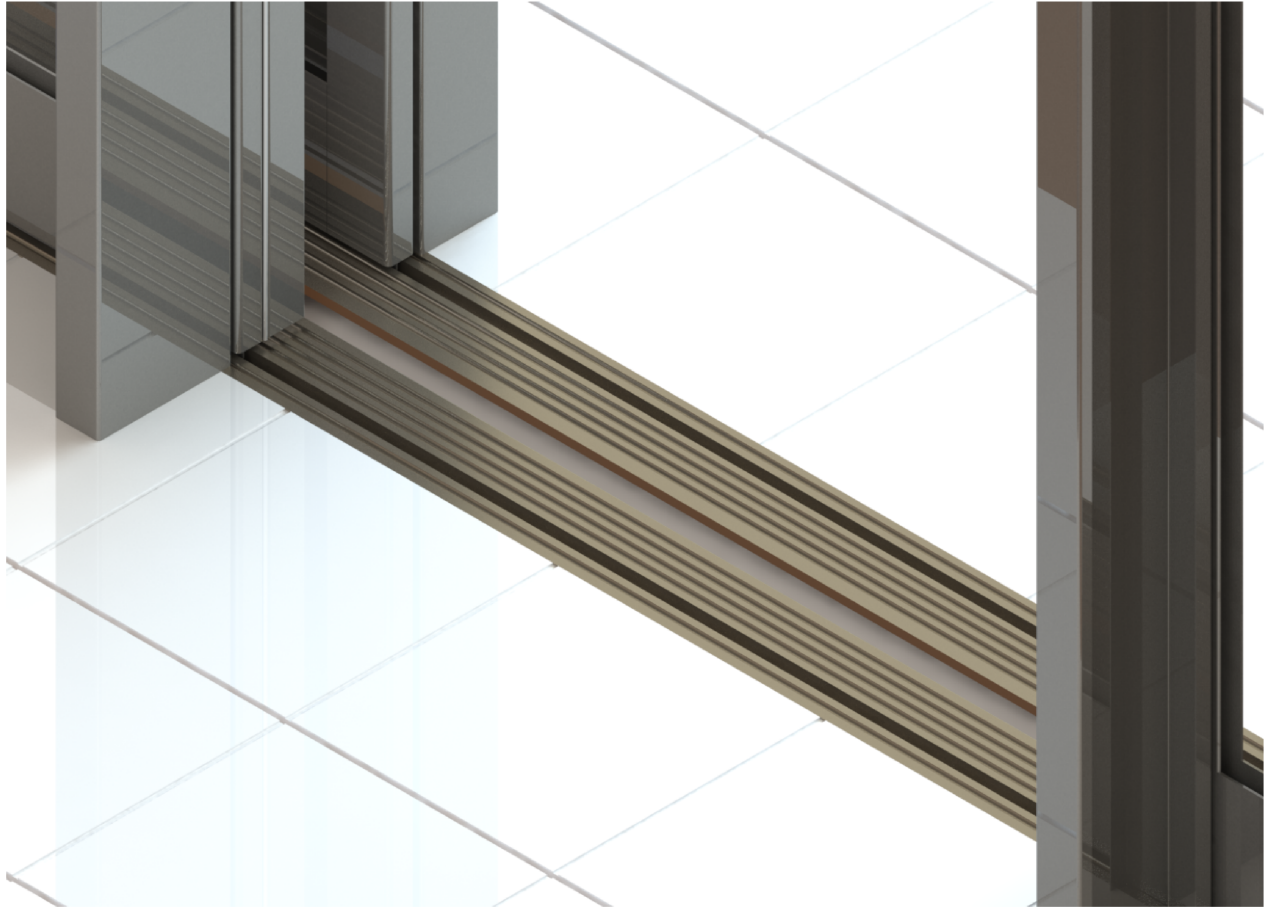


# SILLS

## PASSENGER ELEVATOR CAB & ENTRANCE SILLS



# SILLS

## PASSENGER ELEVATOR CAB & ENTRANCE SILLS

# TYPICAL APPLICATIONS

## EXTRUDED CAB AND ENTRANCE SILLS

STANDARD MATERIALS INCLUDE:

- ALUMINUM - 6063 ALLOY
- BRONZE - C38500 ALLOY
- NICKEL SILVER - 79800 ALLOY
- STAINLESS STEEL - 304 ALLOY

Extruded sills provide an economic solution for smooth opening and closing of passenger elevator doors.

Time-tested, extruded sills feature non-slip traction grooves on the top tread surface to safely enter and exit the elevator cab.

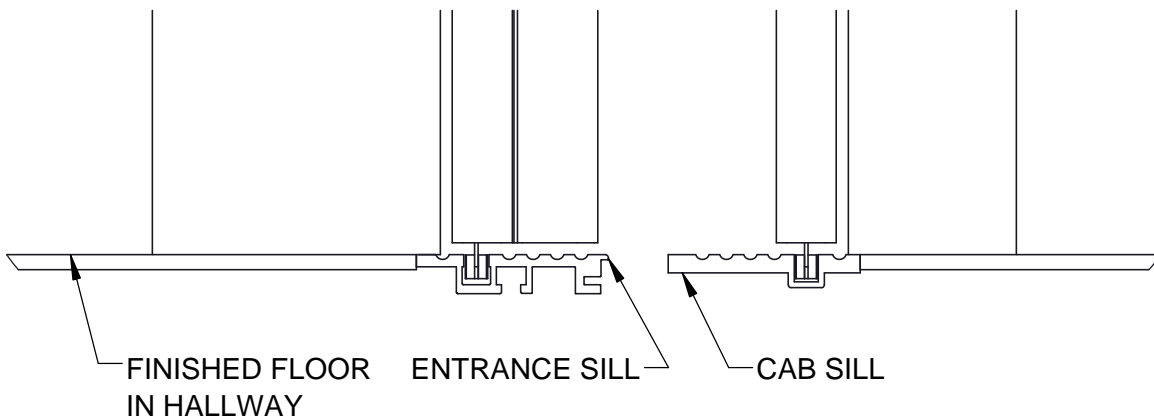
The underside of extruded entrance sills feature bolt grabbing grooves for attachment to sill support or leveling brackets.

## MACHINED CAB AND ENTRANCE SILLS

STANDARD MATERIALS INCLUDE:

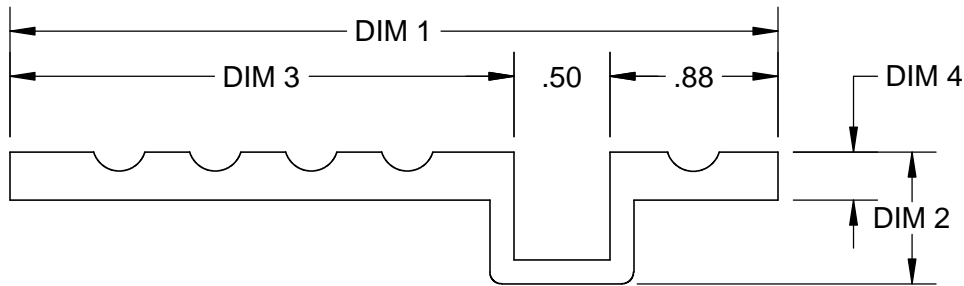
- STAINLESS STEEL - 304 ALLOY

Machined stainless steel sills offer a combination of unmatched aesthetic elegance and a lifetime of rugged quality. Precision linear grooves allow for ease of door installation and operation. Options for size, number of gib travel grooves and locations of tapped bolt holes are unlimited.

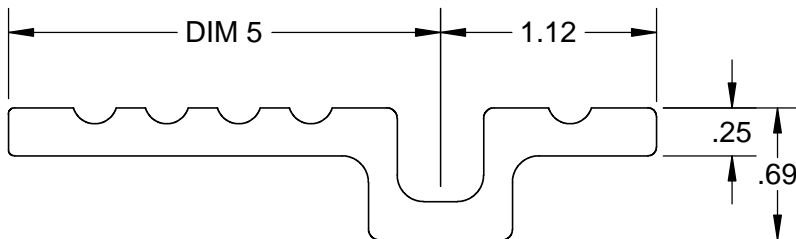


# SILLS

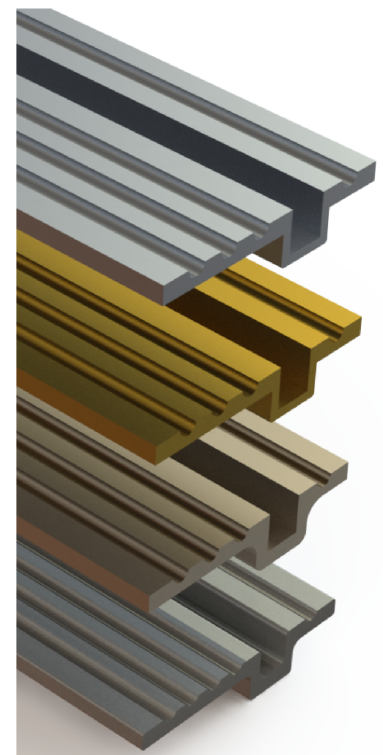
## EXTRUDED CAB SILLS - 1 GROOVE



PART NUMBER	MATERIAL	DIM 1	DIM 2	DIM 3	DIM 4	MAX. LENGTH
PES-1001	ALUMINUM	3.38	0.69	2.00	0.25	20'
PES-1002	ALUMINUM	4.00	0.69	2.63	0.25	20'
PES-1003	BRONZE	3.38	0.69	2.00	0.25	16'
PES-1004	BRONZE	4.00	0.69	2.63	0.25	16'
PES-1005	NICKEL SILVER	3.38	0.75	2.00	0.25	10'
PES-1006	NICKEL SILVER	4.00	0.69	2.63	0.25	10'
PES-1007	NICKEL SILVER	4.00	0.69	2.63	0.38	8'



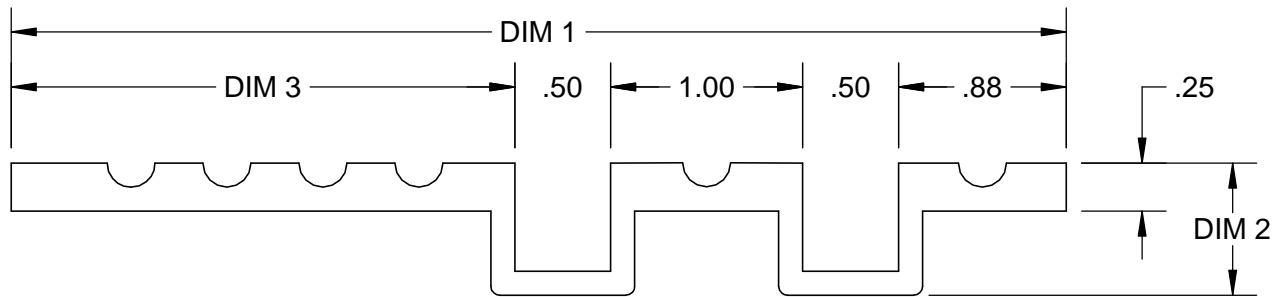
PART NUMBER	MATERIAL	DIM 5	MAX. LENGTH
PES-1008	STAINLESS STL	2.25	8'
PES-1009	STAINLESS STL	2.88	8'



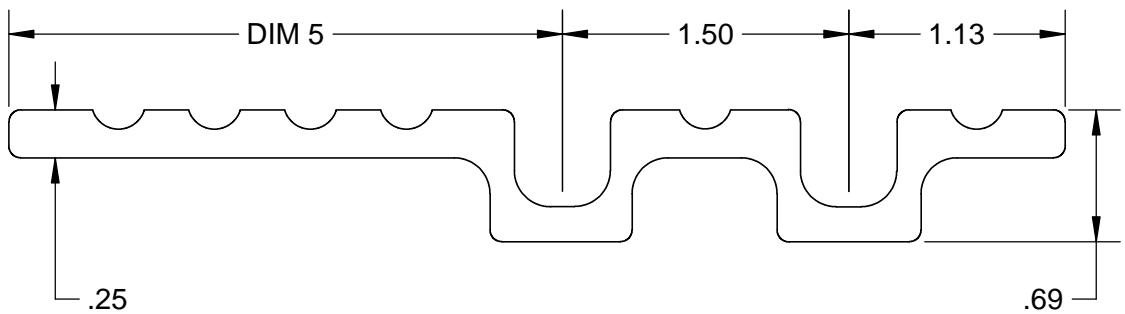
NOTE:  
ALL DIM ARE IN INCHES EXCEPT MAX. LENGTH

# SILLS

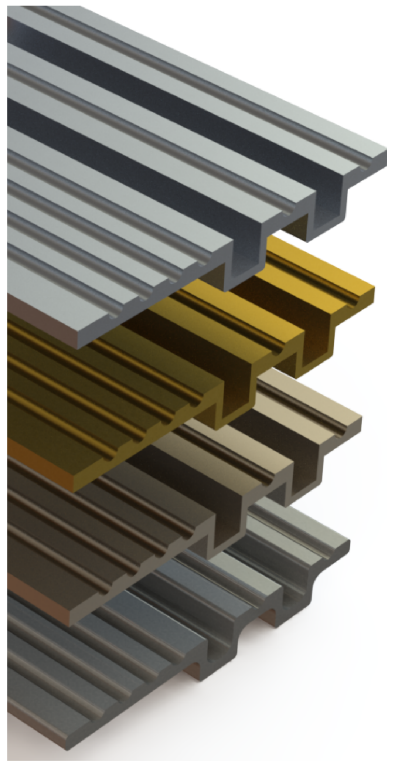
## EXTRUDED CAB SILLS - 2 GROOVE



PART NUMBER	MATERIAL	DIM 1	DIM 2	DIM 3	MAX. LENGTH
PES-1010	ALUMINUM	4.88	0.69	2.00	20'
PES-1011	ALUMINUM	5.50	0.69	2.63	20'
PES-1012	BRONZE	4.88	0.69	2.00	16'
PES-1013	BRONZE	5.50	0.69	2.63	12'
PES-1014	NICKEL SILVER	4.88	0.75	2.00	10'
PES-1015	NICKEL SILVER	5.50	0.69	2.63	10'



PART NUMBER	MATERIAL	DIM 5	MAX. LENGTH
PES-1016	STAINLESS STL	2.25"	8'
PES-1017	STAINLESS STL	2.88"	8'

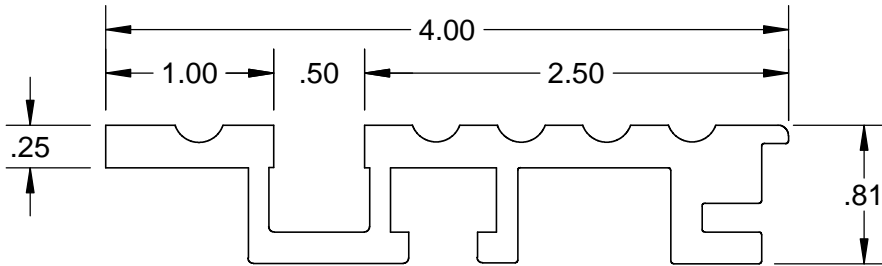


NOTE:  
ALL DIM ARE IN INCHES EXCEPT MAX. LENGTH

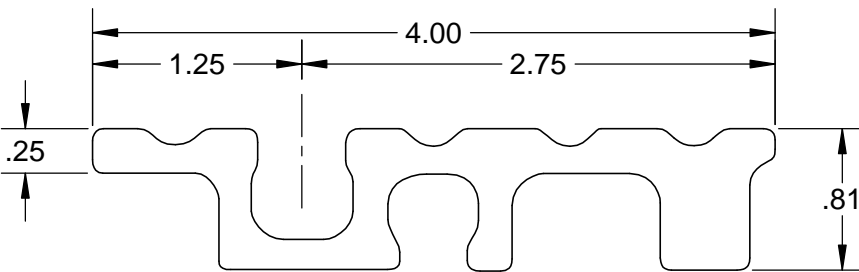


# SILLS

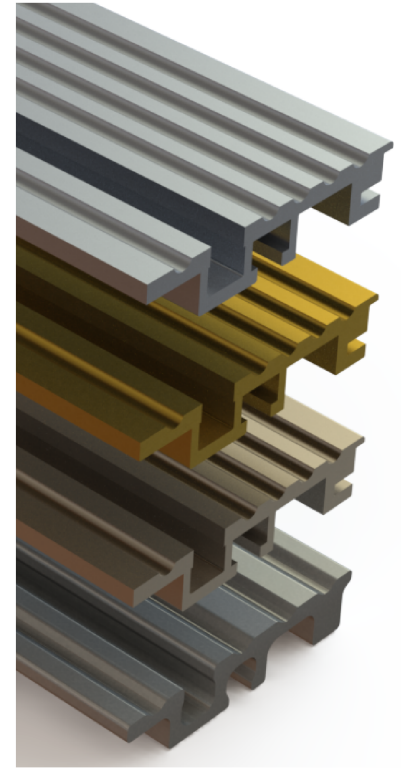
## EXTRUDED ENTRANCE SILLS - 1 GROOVE



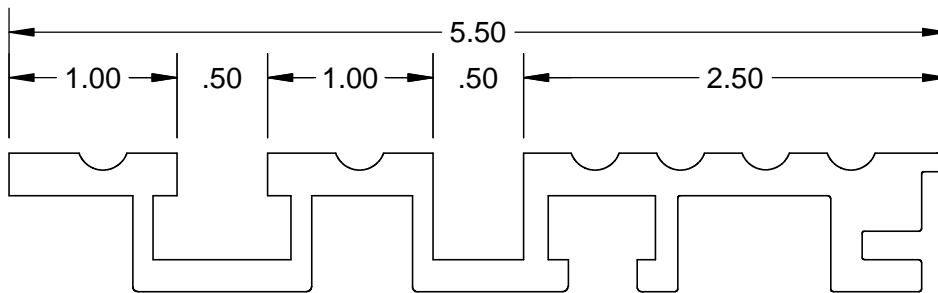
PART NUMBER	MATERIAL	MAX. LENGTH
PES-1018	ALUMINUM	20'
PES-1019	BRONZE	10'
PES-1020	NICKEL SILVER	10'



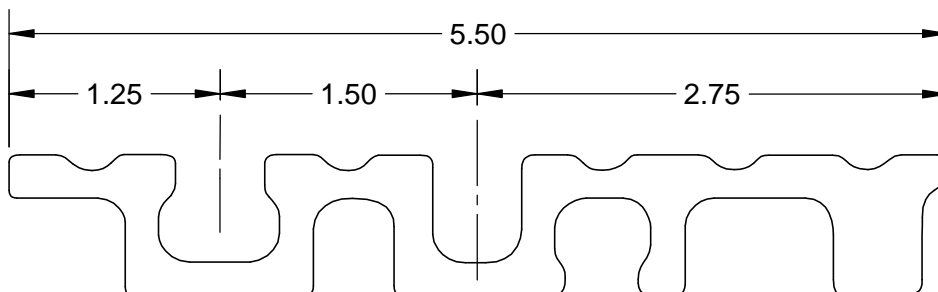
PART NUMBER	MATERIAL	MAX. LENGTH
PES-1021	STAINLESS STL	8'



## EXTRUDED ENTRANCE SILLS - 2 GROOVE



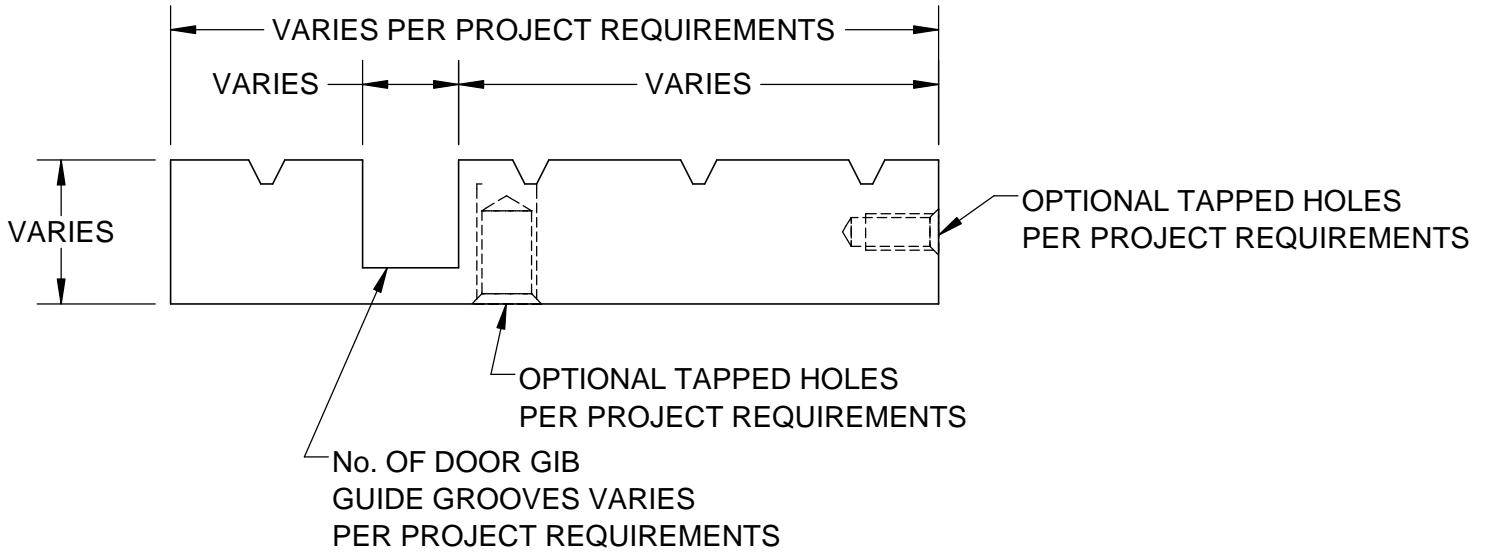
PART NUMBER	MATERIAL	MAX. LENGTH
PES-1022	ALUMINUM	20'
PES-1023	BRONZE	10'
PES-1024	NICKEL SILVER	10'



PART NUMBER	MATERIAL	MAX. LENGTH
PES-1025	STAINLESS STL	8'

# SILLS

## MACHINED CAB & ENTRANCE SILLS



PART NUMBER	MATERIAL	MAX. LENGTH
PES-9999	STAINLESS STL	9'

