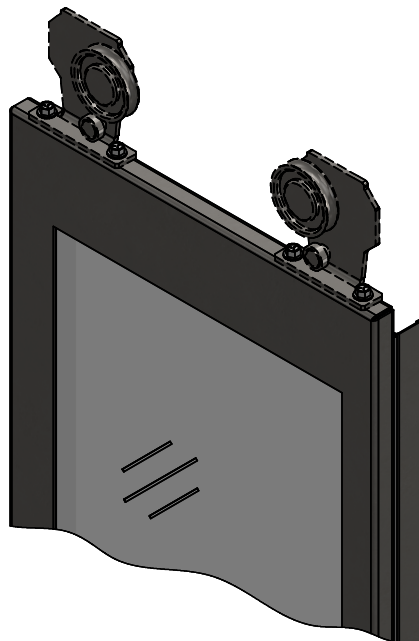
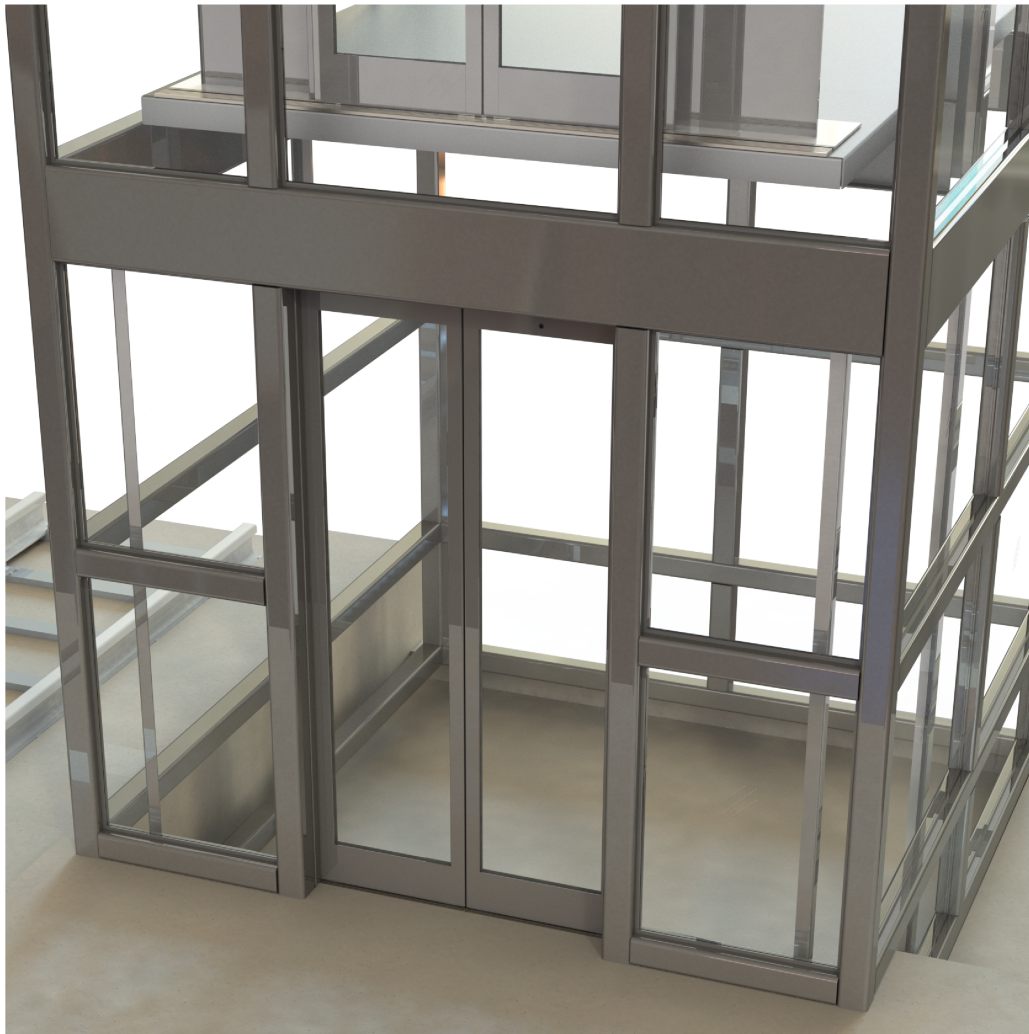


GLADIATOR DOORS

GLASS ELEVATOR CAB & ENTRANCE DOORS



GLADIATOR DOORS

GLASS ELEVATOR CAB & ENTRANCE DOORS

TYPICAL APPLICATIONS

GLASS DOORS INCLUDE:

- LAMINATED SAFETY GLASS
- PERMANENT ANSI Z97.1 & CAN/CGSB12.1 MARKINGS
- ASME A17.1 CODE COMPLIANCE FOR GLASS DOORS AND PANELS
- HEAVY DUTY PANEL AND FRAMING CONSTRUCTION
- STAINLESS STEEL PANEL CONSTRUCTION

Glass elevator doors are common in transit and retail environments.

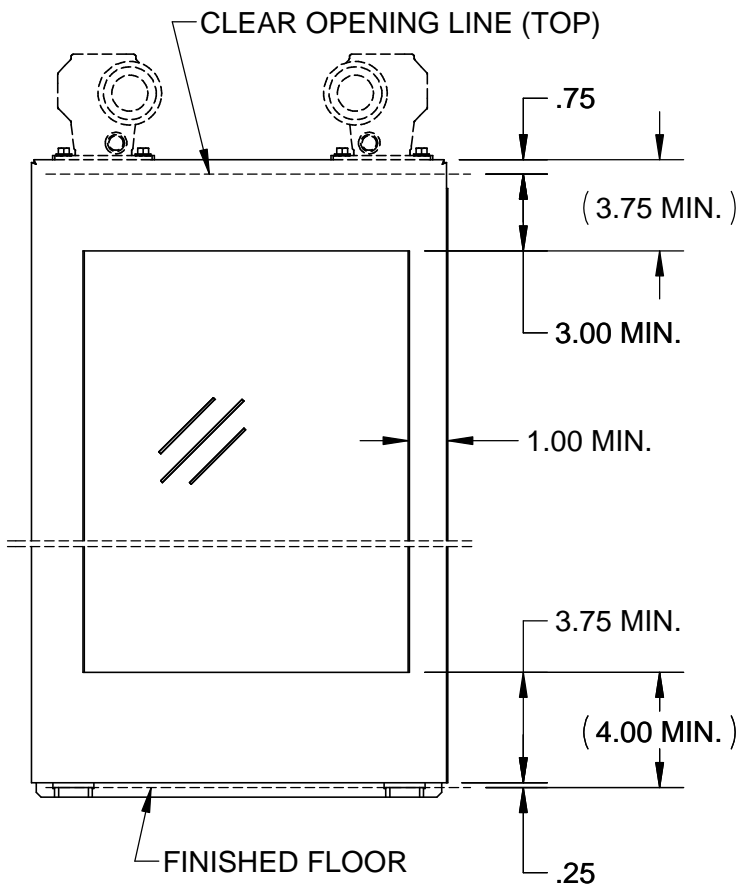
Laminated glass doors provide minimalist aesthetics and attenuate sound.

Transparent doors deliver added security for passengers entering the elevator and may help in pursuit of offenders in public spaces.

Decorative options are available to enhance and transform your environment.

Laminated glass is intended to withstand impacts from passengers as well as outdoor weather.

PANEL GLASS OPENING SIZES:



OPTIONAL FEATURES:

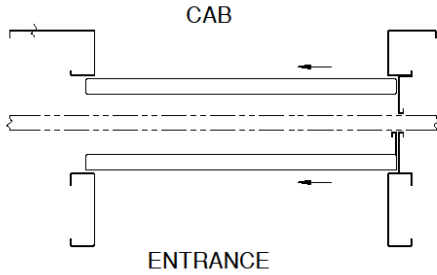
- TEMPERED LAMINATED GLASS
- LOW IRON / ULTRA CLEAR / STARPHIRE GLASS
- ANTI-GRAFFITI FILM
- 3M ARCHITECTURAL GLASS FINISHES
- CERAMIC INK PRINTING
- COLOR INTERLAYERS
- BRONZE FINISHES
- RIGIDIZED METALS FINISHES
- FORMS+SURFACES FINISHES
- CUSTOM ETCHED PANEL DESIGNS



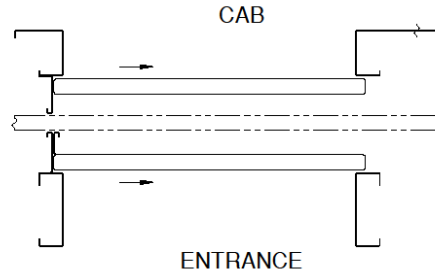
GLADIATOR DOORS

GLASS ELEVATOR CAB & ENTRANCE DOORS

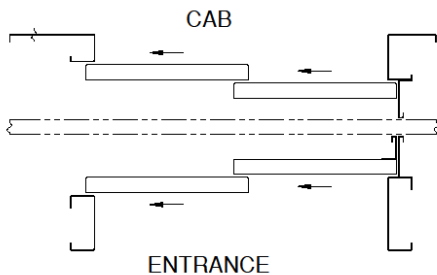
DOOR OPENING TYPES:



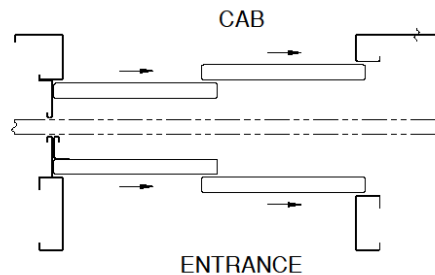
SINGLE SLIDE RIGHT HAND (1SR)



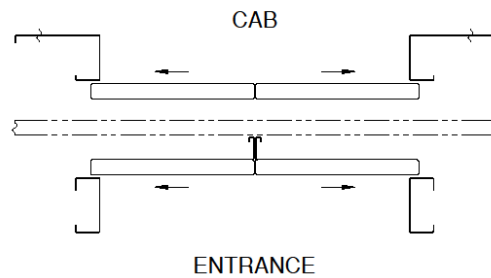
SINGLE SLIDE LEFT HAND (1SL)



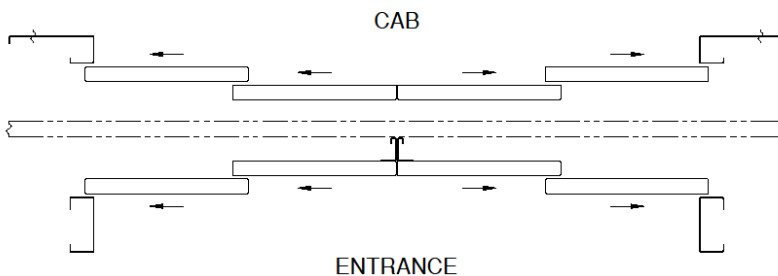
TWO SPEED RIGHT HAND (2SR)



TWO SPEED LEFT HAND (2SL)



CENTER OPENING (CO)



TWO SPEED CENTER OPENING (2SCO)